



Indiana University
School of Medicine

Search for the Executive Vice President for University Clinical Affairs and Dean
Indiana University School of Medicine
Indianapolis, Indiana

THE SEARCH

Indiana University (IU) seeks a forward-thinking, dynamic, and collaborative leader to serve as the next Executive Vice President for University Clinical Affairs and Dean of the School of Medicine (EVP/Dean). This is an extraordinary opportunity to lead the largest medical school in the nation, seizing on a legacy of broad educational reach, unprecedented research growth, a highly aligned clinical partnership with IU Health, and a flourishing innovation ecosystem across Indiana to bring the School of Medicine (IUSM) to new levels of success, prominence, and impact.

Located on the campus of IU Indianapolis and operating at scale across eight other regional campuses, IUSM trains the majority of physicians in Indiana and reaches nearly every corner of the state. As the only allopathic medical school in the state, IUSM offers four years of medical education at all nine campuses. Within the past decade, the School has expanded its class size by 30% and today enrolls nearly 1,500 medical students and trains more than 1,400 residents and fellows, 191 doctoral students, 176 master's students, and almost 236 undergraduate students in allied health fields and health professions programs.

IUSM benefits from close alignment with [IU Health](#), Indiana's largest and most comprehensive health care system, with 16 hospitals across the state. IUSM's partnership with IU Health—further enhanced by the EVP/Dean serving as a member of the Board of Directors and Chair of its Research and Education Committee—spans the tripartite mission, offering innumerable opportunities for collaboration across five basic science departments, 20 clinical departments, and three highly regarded institutes: the [Cardiovascular Institute](#), the [Neuroscience Institute](#), and the Cancer Institute, which includes the [Melvin and Bren Simon Comprehensive Cancer Center](#), the only National Cancer Institute-designated comprehensive cancer center in Indiana and one of only 57 in the nation. IU Health's further expansion includes a \$4 billion, 2-million-square-foot, 864-bed hospital scheduled for completion in 2027.

IUSM's strong research enterprise plays a crucial role in Indiana's economic landscape. In 2024, IUSM researchers were awarded \$546 million in external research funding, including more than \$248 million from the National Institutes of Health (NIH). This represents 40% growth since 2018 and, according to rankings released by the Blue Ridge Institute for Medical Research, places IUSM as 13th among all public medical schools in the United States. As IUSM's research program grows, so do the benefits to Indiana. According to data from a [2025 report](#) by United for Medical Research, every \$1 million in NIH funding awarded to Indiana researchers creates nearly ten jobs, the income from which generates \$2.56 million in economic activity. Based on that data, IUSM's 2024 NIH funding is responsible for creating about 2,431

jobs and an estimated \$635 million in economic activity in Indiana—more than half of the estimated total \$1.1 billion in economic activity generated from NIH funding in the state.

In 2024, Indiana became the nation's #1 state for life sciences exports and according to the [Indiana Life Sciences Association](#), the life sciences industry alone accounts for about 15% of Indiana's economy—more than \$95 billion and 67,000 new jobs. IUSM has played a critical role in these efforts, leveraging physical proximity into robust collaborations with major, regionally-based corporate partners including Eli Lilly and Company, Cook Medical Group, and Roche Diagnostics. Since 2000, the Lilly Endowment has provided more than \$200 million to support initiatives in genomics, translational science, and physician scientists within IUSM, as well as a [\\$138 million grant](#) to the IU Foundation in support of [IU Launch Accelerator for Biosciences](#) (IU LAB—the largest grant ever received by IU in support of R&D). Now under development at the nearby [16 Tech Innovation District](#) in downtown Indianapolis, IU LAB will work in close collaboration with the IUSM and IU Health to advance a wide range of translational research programs and innovation-driven opportunities. The EVP/Dean will work to leverage this extensive growth and wide-ranging reach to raise IUSM's profile and strengthen collaborations across IU, Indiana, and beyond.

The ideal candidate for the EVP/Dean role will be a highly accomplished and respected leader across all of IU's missions – research, education, and clinical care – who brings proven administrative experience and a track record of bolstering scholarship, inspiring innovation, and leading an expansive clinical enterprise. With an overriding commitment to serving the public good, the EVP/Dean will address the following opportunities and challenges listed below and detailed on pages 6-8 of this document:

- Support educational excellence and student success;
- Drive and champion a bold vision to support IUSM;
- Build upon a legacy of clinical excellence and exceptional partnership with IU Health;
- Inspire cutting-edge research to bolster IUSM's clinical trials footprint and expand translational research activities, including inventions, patents, and start-up company formation;
- Nurture and support highly dedicated faculty and staff, and recruit new talent; and
- Promote interprofessional collaboration and partnership across the health sciences.

ABOUT INDIANA UNIVERSITY

[Indiana University \(IU\)](#) is a major multi-campus public research institution, grounded in the liberal arts and sciences, and a world leader in medical, professional, and technological education. IU students, faculty, and staff represent a dynamic cross-section of the world, with approximately 90,000 students from all 50 U.S. states and 164 countries. IU spans seven campuses and two regional centers, and boasts nine school of medicine campuses, and partner locations around the globe. IU maintains two Research 1 (R1) campuses in Bloomington and Indianapolis, one of only a few universities in the nation with such a distinction. In addition to holding R1 status, Indiana University Bloomington is a member of the Association of Public and Land-Grant Universities (APLU) and the Association of American Universities (AAU), as well as the Big Ten Academic Alliance. IU is guided by its strategic plan: [IU 2030: The Indiana University Strategic Plan](#), which was developed under the leadership of IU President Dr. Pamela Whitten. See [Appendix I](#) for additional information on Dr. Whitten and IU 2030.

In 2023, IU announced a historic \$250 million investment to position the University (and state) as a global leader in life sciences and biotechnology innovation. The funding commitments, which rival the largest investments made in these areas by the nation's leading public and private research universities, will facilitate the construction of two new research institutes, new faculty appointments in the life sciences, new and renovated facilities—including the construction and renovation of an additional 48,000 square feet of research labs, teaching spaces, and related support areas in the new medical education and research building at IUSM—and major education and research initiatives representing one of IU's largest strategic investments in life sciences, human health and biotechnology.

ABOUT INDIANA UNIVERSITY SCHOOL OF MEDICINE

In addition to [IU School of Medicine's \(IUSM\)](#) main campus in Indianapolis, its eight regional campuses in Bloomington, Evansville, Fort Wayne, Gary, Muncie, South Bend, Terre Haute, and West Lafayette are all structured under the same accreditation and common curriculum. For more information on IUSM's campuses, see [Appendix II](#).

The School has an annual budget of \$2 billion and more than 3,500 full-time and 3,000 part-time faculty on staff, including 171 endowed chairs and 116 endowed professorships.

IUSM is guided by its [2030 Strategic Plan](#) in alignment with IU 2030. This plan was developed with input from hundreds of members of the IUSM community and is anchored by three key goals/pillars: *Maximize learner success statewide; Accelerate discovery and clinical translation; and Improve health and wellness of the people of Indiana and beyond.*

Education and Training

As the largest medical school in the country, training and education are the cornerstones of IUSM's mission. IUSM offers exceptional training for students wishing to pursue a medical degree, residents and fellows looking for strong inpatient and outpatient training experiences, undergraduate students ready to train as critical medical personnel, graduate students looking for research opportunities, and practicing physicians and professionals looking for lifelong learning opportunities.

Through IUSM's MD curriculum, medical students benefit from a strong integration of basic science knowledge and clinical experiences. The curriculum emphasizes interprofessional experiences, providing students opportunities to train alongside colleagues in other fields of medicine. The MD curriculum and supplementary programs, including MD/PhD, MD/JD, MD/MPH, and MD/MBA [dual degree programs](#), ensure future physicians are prepared to succeed in the modern healthcare environment. In 2025, the School had a match rate of 98%: of the 341 matched, 86 will enter IUSM residency programs, with another 23 completing their residencies elsewhere in Indiana.

IUSM Graduate Medical Education programs balance primary, secondary, tertiary, and inpatient quaternary care, ambulatory care, emergency care, and community health. This is possible through five

main affiliate hospitals and many prestigious research and care centers on the Indianapolis campus and across the state staffed by IUSM faculty.

IUSM has a robust non-clinical education mission that includes Master's degree programs in basic, translational, and professional disciplines; PhD programs across ten biomedical sciences; an extensive postdoctoral research fellow cohort; and an MD-PhD program that has NIH Medical Scientist Training Program status (which includes both IU biomedical science and Purdue biomedical engineering specialties).

Learn more about education and training at IUSM [here](#).

Clinical Care

IUSM boasts a uniquely close partnership with [IU Health](#), Indiana's largest and most comprehensive health care system, with nearly 40,000 team members, 16 hospitals, \$8.64 billion in operating revenue, and a statewide market share of 30 percent. The distinctive level of alignment between IU and IU Health enables IUSM's faculty physicians to integrate research findings into patient care and to offer promising clinical research studies to patients close to home. IU Health's statewide footprint also allows IUSM to influence the delivery of care outside the traditional academic health center and to provide the most advanced therapies to patients in community hospitals throughout Indiana. For more information on IU's relationship with IU Health, see [Appendix III](#).

IUSM has a long history of serving Indianapolis' most vulnerable residents as part of a collaboration with Eskenazi Health, the city's safety net healthcare system. Patients at Eskenazi Health have access to expert care provided by IUSM faculty physicians. IUSM physicians staff Eskenazi's Level 1 trauma center, emergency room, and nationally highly regarded burn center, in addition to providing a full range of primary and specialty care. IUSM faculty physicians also provide comprehensive care to Indiana's military personnel and veterans through a long-standing relationship with the Richard L. Roudebush Veterans Administration Medical Center. The medical center, located near IUSM's downtown Indianapolis campus, provides both primary and tertiary care, and IUSM faculty are improving therapies through basic and clinical research related to PTSD, bone and fracture healing, traumatic brain injuries, and other conditions affecting U.S. troops.

IUSM faculty physicians are members of IU Health Medical Group, a multidisciplinary group practice. IU Health Medical Group is committed to ensuring that the School's clinical, research, and educational missions remain closely aligned and that all work remains focused on improving patient care.

Research and Innovation

Indiana's thriving life sciences sector is anchored by [BioCrossroads](#), an innovation hub that advances Indiana's life sciences industry by connecting corporate, academic, and philanthropic partners; facilitating investments in promising start-ups; building new enterprises such as the Indiana Biosciences Research

Institute and the 16 Tech Innovation District; and educating through conferences, reports, and market development knowledge. IUSM was a co-founder of BioCrossroads in 2002 and continues today as a key leader in these collaborations, with the EVP/Dean serving as a member of its Board of Directors. Particular [areas of strength](#) include Alzheimer's Disease, Global Health, Personalized Medicine, Traumatic Brain Injury, Musculoskeletal Health, Indiana Health, and access to health and enhanced health outcomes for all patients.

In May 2025, former Eli Lilly and Co. CEOs John Lechleiter and Randall Tobias partnered on a \$20 million gift to IU Health and IUSM to establish the [Tobias-Lechleiter Institute for Clinical Innovation](#), with a matching gift from IU Health totaling the donation to \$40 million. The Institute aims to triple the number of Hoosiers participating in groundbreaking medical studies, facilitate transformative research, attract and retain talent, and accelerate the impact of medical research across Indiana. IUSM will be a key partner in this effort, with the EVP/Dean serving as an ambassador in the implementation of the Institute over the next five years.

Learn more about research and innovation at IUSM [here](#).

Global Health

As leader of the AMPATH Consortium since its founding in 1988, IUSM is a leader amongst medical schools in the field of global health. AMPATH, which provides care for 24 million people in western Kenya, is a network of academic health centers that aims to foster long-term, equitable and cross-cultural partnerships with host health centers and universities that serve populations with significant unmet needs. Each institution brings their own perspective and provides its own opportunities for medical trainee exchange programs and hands-on education in the U.S., Canada and across the globe. Since its founding, the consortium has received over \$228 million in research grants, treated over 200,000 people for HIV infection, opened a new Cancer and Chronic Disease Hospital, and recently, expanded its network to Mexico, Ghana, and Nepal. Learn more about AMPATH [here](#).

ROLE OF THE EVP/DEAN

Reporting to the President, the EVP/Dean is responsible for the strategic oversight of all educational, clinical, research, and discovery activities within the School supported by the work of six executive associate deans, a senior associate dean, 20 clinical department chairs, four basic science department chairs, and seven center and institute directors/co-directors, as well as dual reporting from select IU Health executives. Key collaborators with the EVP/Dean include (but are not limited to): IU Health leadership, including the CEO and CFO; the CEOs of Eskenazi Health and Roudebush VA Medical Center; Indiana University Clinical Deans; IUSOM Faculty Steering Committee; IU Foundation; and the President's Cabinet. See [Appendix IV](#) for an organizational chart.

As Executive Vice President for University Clinical Affairs, the EVP/Dean serves on the President's Cabinet and coordinates clinical affairs across IU's health sciences enterprise. The EVP/Dean chairs the University

Clinical Affairs Cabinet (UCAC), which works with the Chancellors of the IU regional medical campuses, the IU Indianapolis Chancellor, and the IU Bloomington Chancellor to coordinate clinical activities within their areas of responsibility. UCAC members include the deans of the School of Nursing (UCAC Vice Chair), School of Dentistry, School of Social Work, School of Optometry, School of Health and Rehabilitation Sciences, Richard M. Fairbanks School of Public Health, and School of Public Health Bloomington. The EVP/Dean serves as the principal liaison to IU's clinical partners.

KEY OPPORTUNITIES AND CHALLENGES FOR THE DEAN

To ensure success across all domains, the EVP/Dean must work collaboratively, creatively, and decisively to address the following key opportunities and challenges in support of IUSM's mission.

Support educational excellence and student success

IUSM is the largest school of medicine in the country, with students and trainees dispersed across nine campuses that touch every corner of the state. This expansive geographic reach means that IUSM students come from a wide array of backgrounds and communities, both urban and rural. In this context, the EVP/Dean must work to ensure the highest quality medical education and training, promoting innovative approaches to learning that meet the moment. The EVP/Dean will elevate IUSM's academic priorities to increase retention and graduation rates across the nine campuses and continue to promote a positive student experience at all levels. Notably, the EVP/Dean will position IUSM as a leader in implementing both systemic and initiative-based changes that allow students and physicians to construct sustainable, long-term careers in medicine, encouraging and identifying new opportunities for trainees to stay local and operationalizing a solution to the current statewide physician shortage.

Drive and champion a bold vision to support IUSM

In alignment with IU2030's overall goal to boost student success, drive transformative research, and strengthen service to the state, the EVP/Dean will leverage IUSM's assets to drive an ambitious agenda for the future that elevates and expands the School's educational, research, and clinical work. The EVP/Dean will be an advocate for IUSM, integrating the various perspectives of its broad array of constituencies in developing an inspiring and unified plan for the future. To achieve this goal, the incoming EVP/Dean must be forward-thinking and highly strategic in responding to the changing scientific, technological, and federal funding landscape of academic healthcare. Staying at the forefront of the advancements and implementation of AI and technology in all mission areas of academic medicine will be key to the success of this endeavor.

As IUSM's chief advocate, the EVP/Dean will be guided by a deep commitment to the School's vital role in providing high-quality, accessible healthcare to the state of Indiana. Crucially, the EVP/Dean will work closely with the IU Foundation, enhancing IUSM's visibility to drive philanthropic support, ensuring the future success of IU's education, research, and clinical missions.

Build upon a legacy of clinical excellence and exceptional partnership with IU Health

IUSM's exemplary partnership with IU Health has been central to the success of the School. The EVP/Dean must be fully committed to maintaining this uniquely strong relationship, bringing a collaborative, transparent approach that prioritizes shared goals and opportunities for further integration between the two organizations. In partnership with IU Health leadership, the EVP/Dean will, via dually-employed physicians, help facilitate the highest quality care for patients across the state while maintaining cost effectiveness, enabling IU and its clinical partners to remain nimble and adaptive to evolving needs in the market. In today's healthcare landscape, it is critical that the EVP/Dean unites and aligns the educational and research missions with the clinical care activities across the enterprise.

Inspire cutting-edge research to bolster IUSM's clinical trials footprint and expand translational research activities, including inventions, patents, and start-up company formation

The EVP/Dean will be a respected clinician-scholar who inspires the pursuit of quality science. To do so, the EVP/Dean will stay abreast of federal funding trends, continuing the School's success in securing NIH funding, while also having a strong pulse on other funding modalities, particularly through industry and corporate partnerships. To that end, the EVP/Dean will drive the continued development of the School's translational research activities including inventions, patents, and start-up company formation, as well as identify new ways to align with industry partners in the commercialization of intellectual property and other discoveries.

There is a particularly strong opportunity for IUSM to increase its clinical trials work throughout the state, given its proximity and good relationship with industry. The EVP/Dean will deepen IUSM's partnership with IU Health through the Tobias-Lechleiter Institute for Clinical Innovation, identifying opportunities to bolster clinical trials work and create an infrastructure for groundbreaking disease detection and treatment. Both IU and IU Health have, in fact, prioritized research, enabling the next EVP/Dean to more readily recruit top scientists, trialists, and physician scientists.

Nurture and support a highly dedicated faculty and staff, and recruit new talent

IUSM has a robust faculty development office, one that serves as a model across the nation. The EVP/Dean will ensure continued prioritization of faculty and staff development and wellness, supporting IUSM community members amidst an ever-changing landscape in academic medicine. The EVP/Dean will ensure comprehensive faculty development for all categories and ranks of faculty and provide opportunities for junior faculty to advance on the promotion track. The EVP/Dean will also ensure future success through careful investment in the selective placement of exceptional chairs, faculty, staff, and program directors across IUSM. As part of this goal, the EVP/Dean will work with the IU Foundation to support endowed chairs and professorships. Overall, the EVP/Dean will foster a working environment that enhances retention of faculty and staff through a leadership style that boosts morale, emphasizes collaboration and transparency, and focuses on the future.

Promote interprofessional collaboration and partnership across the health sciences

IU includes a robust health sciences enterprise that includes schools of nursing, dentistry, social work, optometry, health and rehabilitation sciences, and public health, all of which are led by highly accomplished deans energized to collaborate in support of IU's mission and vision. As the principal liaison to IU's clinical partners and chair of UCAC, the EVP/Dean plays a critical leadership role amongst the deans. The EVP/Dean will address this role with rigor, identifying new opportunities for clinical coordination across the health sciences based on an appreciation for team-based science, while also working to create new opportunities for interprofessional education. Ultimately, the EVP/Dean will be a highly effective, enthusiastic advocate for the health sciences at IU and will foster a cohesive, supportive, and interrelated relationship across these entities.

QUALIFICATIONS AND CHARACTERISTICS

To be considered, candidates must:

- Have earned an MD or MD/PhD and a strong record of professional accomplishment and contribution;
- Hold or have held a senior-level leadership role in a well-ranked school of medicine; and
- Bring a strong record of scholarship and/or professional activity consistent with appointment at a senior level in a research university.

In addition, the preferred candidate will possess the following qualifications and characteristics:

- A national presence reflecting an impactful leadership background;
- A strong track record of working collaboratively to advance programs and initiatives;
- Ability to work in a matrixed environment by empowering and motivating staff and delegating responsibility;
- A student-centered approach and belief in the importance of excellence in public education;
- Experience leading and catalyzing change within a multi-faceted academic portfolio;
- Experience developing industry partnerships and collaborations;
- Experience leading and/or overseeing federally funded programs and/or projects;
- A history of advocacy for the advancement of academic medicine across the tripartite mission of education, research, and clinical care;
- A strategic orientation, including the ability to consider broad and long-term factors when planning and making decisions;
- A reputation for integrity, openness, and the ability to inspire trust;
- A demonstrated understanding of local, state, and federal political processes and the role of academic leadership in impacting policy direction;
- A well-articulated understanding of the competitive and ever-changing health care delivery and professional education landscapes;
- Deep experience managing the finances of a complex organization, with a strong return-on-investment philosophy;
- An ethos of servant leadership, with a focus on developing and inspiring internal and external constituencies;

- A commitment to interdisciplinarity and technology-driven innovations; and
- A comfort with networking on behalf of the University to promote philanthropy through a strong community presence and exceptional relationship management skills.

INDIANAPOLIS, INDIANA

Indianapolis is the capital and most populous city in the state of Indiana. It is growing economically thanks to a strong corporate base anchored by the life sciences. Indiana is home to one of the nation's largest concentrations of health sciences companies. Indianapolis has a sophisticated blend of charm and culture with a wonderful balance of business and leisure. The growing residential base is supported by rich amenities and quality of life – the city possesses a variety of professional sports, arts venues, and outdoor recreation areas. Residents of this dynamic city and surrounding suburbs enjoy leading educational systems and top-ranked universities paired with a diverse population. Indianapolis International Airport is a top-ranked international airport that has been named “Best Airport in North America” by Airports Council International for many years. For additional information on life in Indy follow this [link](#).

APPLICATIONS, INQUIRIES, AND NOMINATIONS

All inquiries, nominations, and applications should be directed in confidence to:

Patricia Hastie, Partner
Randi Herrick, Partner
Carley Davenport, Managing Associate
Maya Bennett, Senior Search Coordinator
Sarah Sweeney, Search Coordinator
Isaacson, Miller

Electronic submission of materials at [this link](#) is strongly encouraged.

Equal Employment Opportunity

Indiana University is an equal opportunity employer and provider of ADA services and prohibits discrimination in hiring. [See Indiana University Notice of Non-Discrimination here which includes contact information.](#)

Campus Safety and Security

The Annual Security and Fire Safety Report, containing policy statements, crime and fire statistics for all Indiana University campuses, is [available online](#). You may also request a physical copy by emailing IU Public Safety at iups@iu.edu or by visiting IUPD.

This document has been prepared based on the information provided by Indiana University. The material presented in this leadership profile should be relied on for informational purposes only. While every effort has been made to ensure the accuracy of this information, the original source documents and information provided by Indiana University would supersede any conflicting information in this document.

APPENDIX I. IU PRESIDENTIAL LEADERSHIP

Pamela Whitten became the 19th president of Indiana University on July 1, 2021. A visionary scholar and accomplished educator and researcher, Whitten has held a variety of leadership roles, beginning at Michigan State University where she served as a dean for five years, as provost and senior vice president for academic affairs at the University of Georgia, the largest university in Georgia, and as president of Kennesaw State University. Whitten holds a PhD in communication studies from the University of Kansas, a Master of Arts in communication from the University of Kentucky, and a Bachelor of Science in management from Tulane University. She is an internationally recognized founding researcher in the field of telemedicine. As part of her work in higher education, she additionally held leadership roles at the University of Kansas Medical Center.

[IU 2030: The Indiana University Strategic Plan](#), developed under President Whitten's leadership and approved by the Board of Trustees in 2023, sets forth an ambitious vision for IU's third century, reaffirming the University's rightful place within the highest tier of American public higher education by accelerating student success and opportunity, delivering transformative research and creativity, and promoting service to its state and beyond. Notably, IU 2030 places an emphasis on collaboration with industry and community partners to drive innovative research and creative activities, enhancing societal and economic outcomes, making strategic investments that will lead to groundbreaking discoveries. Metrics of progress against this goal include expanding external sponsored research, increasing invention disclosures by 100%, and moving into the top 10 of NIH funding to public medical schools (currently #13).

APPENDIX II. IUSM CAMPUSES

Among the many characteristics that set IUSM apart from other medical schools in the United States is its statewide campus system. With nine campuses located in some of Indiana's most livable cities, IUSM offers a wide variety of working and learning environments to meet different styles, needs, and interests.

Bloomington

The Medical Sciences Program in Bloomington is unique among IUSM campuses in that it educates medical students seeking an MD as well as graduate and undergraduate students. Bloomington offers a Big 10 learning environment on an iconic campus. Learn more [here](#).

Evansville

With six major hospitals housing about 2,000 beds, medical students in Evansville have access to physician educators in a range of medical specialties. An expanded residency program will provide more than 100 new graduate medical education positions over the next few years. Learn more [here](#).

Fort Wayne

The Fort Wayne campus is located at IU Fort Wayne in northeast Indiana. The campus offers clinical education in both rural and urban communities through two large hospital systems serving the region. Notably, IU Health is building a brand new state-of-the-art hospital in Fort Wayne that will open in 2027. A Student Research Fellowship Program offers medical students nine weeks of summer research experience. Learn more [here](#).

Muncie

Muncie is the School's only campus that's located on hospital property, giving medical students a front-row four-year medical education with all the amenities that come with being located near the campus of Ball State University, a bustling college environment. Learn more [here](#).

Northwest-Gary

Located in a highly populated urban region just 25 miles from downtown Chicago, the Gary campus offers medical students unparalleled access to clinical care at 11 major teaching hospitals housing 2,800 beds. An expanded residency program in Gary will accommodate more than 100 new graduate medical education positions. The campus is home to the Urban Medicine Program. Learn more [here](#).

South Bend

IU School of Medicine-South Bend is located on the campus of Notre Dame, offering a rich campus life in a traditionally collegiate community. Students here gain clinical care experience at the Navari Student Outreach Clinic, and external funding for faculty research exceeds \$2 million per year. Learn more [here](#).

Terre Haute

Known for its rural medical education program, IU School of Medicine-Terre Haute meets the increased need for physicians to serve rural communities throughout the state of Indiana and beyond. This unique four-year medical school program emphasizes primary care and other specialties of need in rural communities. Learn more [here](#).

West Lafayette

Located on the campus of Purdue University, the West Lafayette campus offers a Big Ten campus atmosphere and opportunities to supplement the MD curriculum with research experience in its collaborative labs and research centers. Medical students in West Lafayette have opportunities for interprofessional education with pharmacy, nursing, psychology, and other areas. Learn more [here](#).

Appendix III. IU Health

IU Health is an independent 501(c)(3) organization, working primarily in partnership with the Indiana University School of Medicine (IUSM), but also with other allied health schools across IU Health, including IU School of Nursing, IU Schools of Public Health (Bloomington and Indianapolis) and others. With this close relationship, IU and IU Health are deeply intertwined—both historically and functionally. The relationship between the entities is deep and extremely important for IUSM, IU, and the state.

The IU–IU Health partnership is a fully integrated academic health enterprise: IUSM is the education and research engine and IU Health is the clinical delivery and healthcare workforce vehicle. Governance, funding, and mission are deeply connected, fostering statewide medical services, professional training, and public health impact.

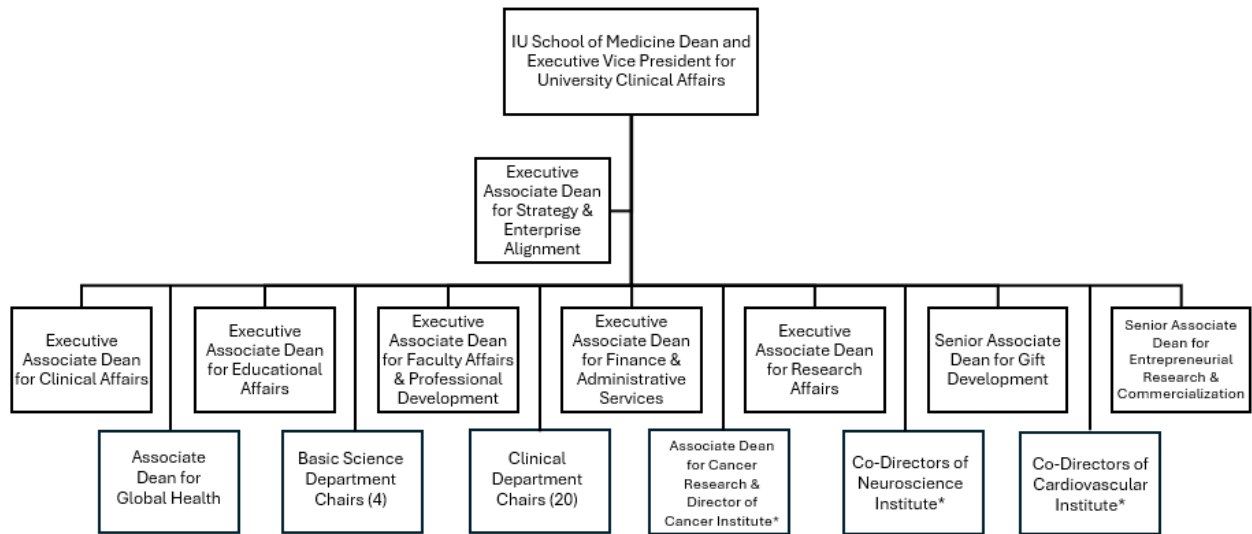
IUSM partners with IU Health to train physicians, blending breakthrough research and treatments with the highest quality of patient care. IU Health employs nearly 4,000 physicians and over 1,300 advanced practice providers through its physician groups. Continued strategic alignment across the system has enhanced IU Health’s focus on research, elevated quality and safety, and supported further expansion into the Indianapolis metropolitan area, where more than 2 million Hoosiers reside. The system’s programs in cancer, cardiovascular, neuroscience, orthopedics, pediatrics and transplants have received national recognition for quality patient care. IU Health Simon Cancer Center is associated with IU Melvin and Bren Simon Cancer Center, Indiana’s only National Cancer Institute (NCI)-designated comprehensive cancer center.

Partnership Origins and Growth

Three Indianapolis hospitals—Methodist and two hospitals associated with Indiana University (Riley Children’s, and University)—merged on January 1, 1997 to form Clarian Health Partners, creating an integrated academic health system. In 2011, Clarian Health rebranded as Indiana University Health, emphasizing its academic affiliation with IU and the IU School of Medicine. Governance for IU Health remains shared: IU’s Board of Trustees and the United Methodist Church each appoint board members, preserving historical roots.

IU Health serves as the primary clinical arm of IU School of Medicine—sponsoring over a thousand of medical residents and fellows, with IU Health funding their positions at its facilities as required by the 1997 consolidation agreement. It functions as a comprehensive academic health system, delivering patient care, education, and research statewide. IU Health facilities—like IU Health Methodist, Riley Children’s, and University Hospital—are the primary teaching hospitals for IUSM students and trainees. In addition, IU Health facilities in Ball, Bloomington, and Arnett are located on regional IUSM campuses and, as of July 2026, will host IUSM residencies

APPENDIX IV. IUSM ORGANIZATIONAL CHART



*Dual reporting with IU Health Chief Medical Executive